



FACULTY OF SAFETY ENGINEERING

VSB - TECHNICAL UNIVERSITY OF OSTRAVA

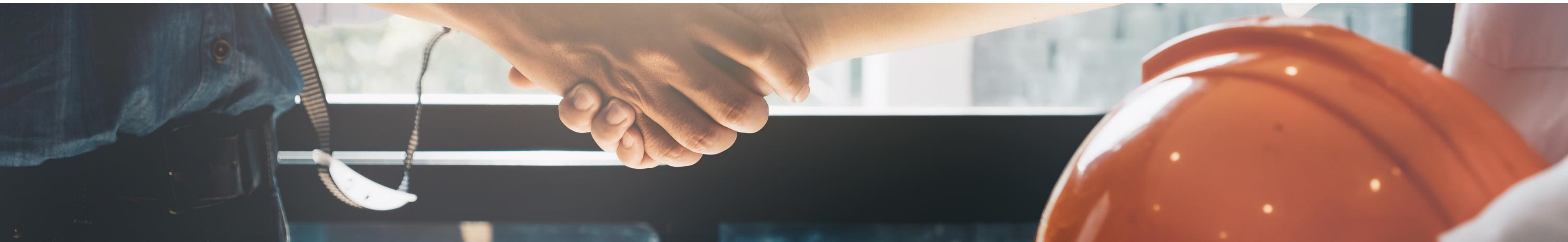


FOCUSED ON SAFETY AND SECURITY

HSE PROFESSIONAL

the master's follow-up study
full - time study programme (2 years)
in Ostrava, Czech Republic
taught in English

the tuition fee: EUR 4000 per academic year





HSE PROFESSIONAL

List of courses



I. SEMESTER

Fundamentals of Production Technologies

Hazard science

Risk Analysis Principles and Methods

Risk management systems

compulsory optional courses:

Applied Chemistry for HSE

Applied statistics

Project management

II. SEMESTER

Chemicals management

Environmental Protection and Safety

Fire Safety

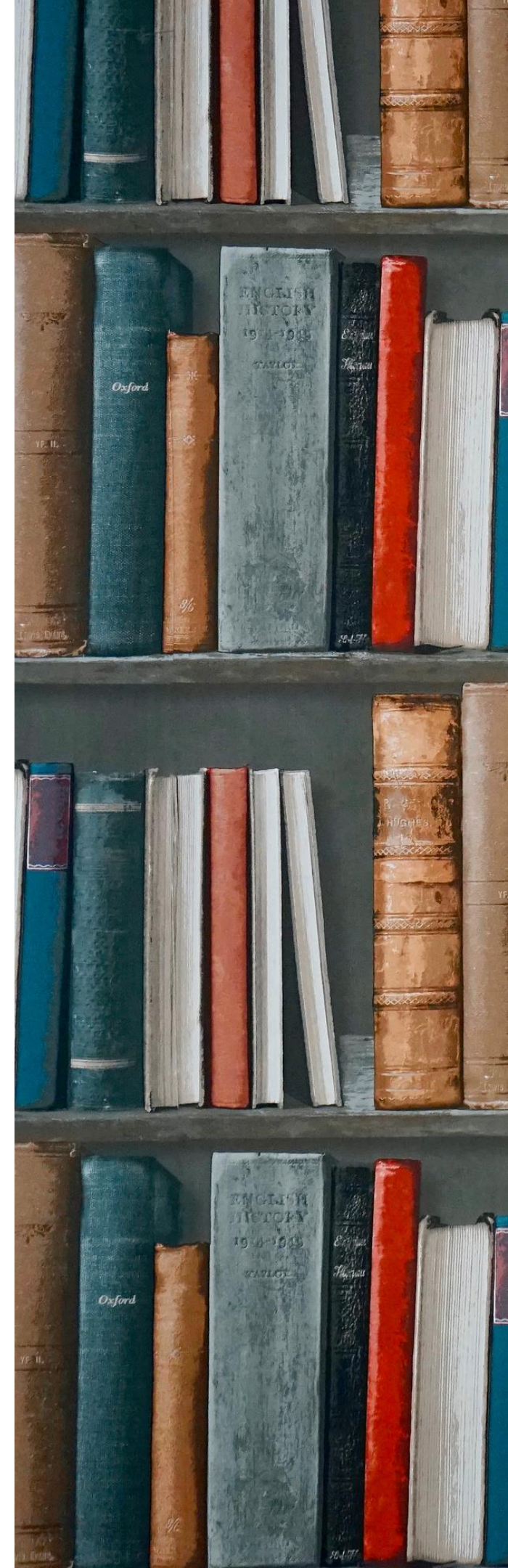
Principles and Practice of Occupational Safety
and Health

compulsory optional courses:

Introduction to scientific modelling

Principles of physical measurement

Product safety





III. SEMESTER

Fire protection and society

Investigation of incidents and accidents

Safety culture

Sustainable Entrepreneurship

Work Environment and Ergonomics

compulsory optional courses:

Human Resource Management

Occupational medicine

Physical security systems

IV. SEMESTER

Practice of HSE Professional
Diploma thesis seminar



A hand holding a magnifying glass over the word 'JOB'. The magnifying glass is positioned over the word 'JOB', which is written in a white, stylized, hand-drawn font. The background is a solid yellow color.

JOB

FUTURE SPECIALISATION

HSE manager
Occupational safety inspector
OSH Technician
OSH coordinator at a construction site



ADMISSION PROCEDURE

How to apply?



ADMISSION PROCEDURE

FOR

HSE PROFESSIONAL

STEP BY STEP

HSE PROFESSIONAL

Admission is conditional on completion of a Bachelor's or (follow-up) Master's degree programme (in the Czech Republic or abroad).

No exam in the admission procedure.



I. STEP

prihlaska.vsb.cz

the new application - create

New application

Bachelor's, Master's and Doctoral study programmes.

Create

Summary of applications

A summary of submitted applications, payments and results.

View

You can easily create and fill in the entire application online.

Faculty of Safety Engineering

study programme: HSE Professional, N1022A020001

payment: 500 CZK (approximately EUR 20)

The deadline

First round

from 1st November 2020

till 28th February 2021

Second round

from 1st August 2021

till 25th August 2021





Which documents should I upload?

II. STEP

A copy of the higher education diploma attesting to the degree acquired in the previous Bachelor or (follow-up) Master study.

A copy of the “Diploma Supplement” (or the Final State Examination Certificate).

A certificate demonstrating language skills in English at B1 level (e.g. TOEFL, IELTS or another document proving knowledge of the English language).



Candidates from abroad (except for candidates from the Slovak Republic) must submit the following documents together with the application for study:

- a copy of the recognition of the diploma, i.e. the certificate of recognition of foreign higher education and qualifications in the Czech Republic;
- a copy of the translation of the diploma in Czech or English, if the original is in another language.



YOU CAN UPLOAD DOCUMENTS NOW OR GRADUALLY TILL

30th June 2021 (first round) / 25th August 2021 (second round)

by Summary of applications

New application

Bachelor's, Master's and Doctoral study programmes.

Create

Summary of applications

A summary of submitted applications, payments and results.

View

You can easily create and fill in the entire application online.

NEED HELP?

Contact us!

mobility.fbi@vsb.cz

Recognition of foreign education

<https://www.vsb.cz/en/university/university-services/recognition-of-foreign-education/>



III. STEP

After 30th June 2021, the Dean of the faculty gives his final decision for acceptance.

The latest term is 30th July!



An applicant who has been **successfully accepted to study** will receive an email with instructions for study enrollment.

Please, confirm your enrolment immediately.

IV. STEP

After enrollment we will send you:

- Letter of Acceptance
- Confirmation of admission to study
- Confirmation of study period





WELCOME TO THE TEAM FSE

DON'T FORGET

VISA

<https://www.vsb.cz/en/study/study-in-ostrava/visa/>

ACCOMMODATION

<https://www.vsb.cz/ubytovani/en>

HEALTH INSURANCE

<https://www.vsb.cz/en/study/study-in-ostrava/health-insurance/>



INTERNATIONAL CONTACT POINT

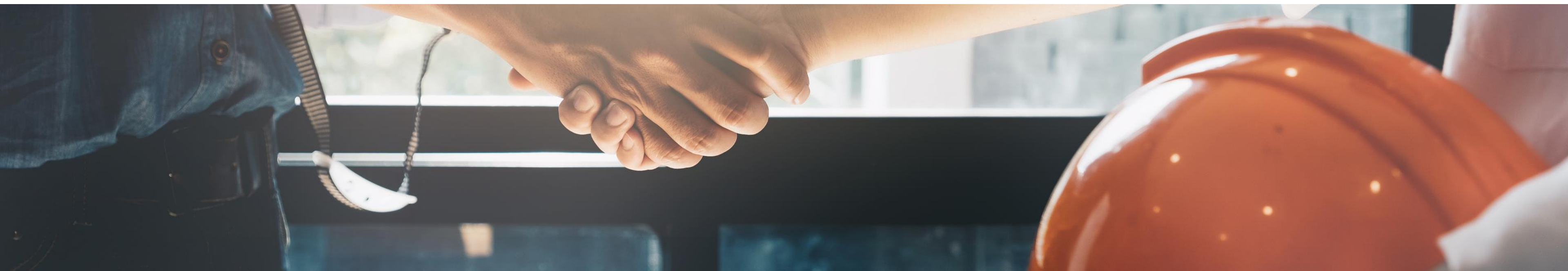
IS HERE TO HELP YOU!



HSE PROFESSIONAL

MASTER DIPLOMA IN HEALTH, SAFETY & ENVIRONMENT MANAGEMENT

STUDY WITH US!





MAKING THE WORLD
SAFER TOGETHER

**KEEP IN TOUCH
WITH US**



CONTACT US

**prof. Aleš Bernatík, Coordinator for study
programme HSE Professional**

**FACULTY OF SAFETY ENGINEERING
LUMÍROVA 630/13,
700 30 OSTRAVA-VÝŠKOVICE,
CZECH REPUBLIC**

www.fbi.vsb.cz/en